

Rogue Community College

2020 - 2030 Facilities Master Plan

Prepared January 2020



Executive Summary



Executive Summary

The 2020-2030 Redwood Campus Facilities Master Plan will provide RCC with a strategy for planned academic growth and facility improvements to support their vision of the future. During the past five years RCC has experienced a slight decline in enrollment, while passing a construction bond to improve campus facilities. The focus of this master plan is to determine the location for a new Science Center and other required campus improvements.

The goal of this planning process was to assess both the academic needs and facility utilization, to ensure the instructional needs are supported by appropriate spaces and facilities. This process involved an engagement strategy that shared ideas and solicited input from faculty, students, community partners, and local and regional governing bodies. To assess College needs, focus group work sessions were held with the following:

- Instructional Services
- College Services
- Student Services
- RCC Foundation
- Facilities and Operations
- Campus Technology

From these focus groups came the development of core conceptual principles for college growth and focus for the next ten years:

- Strengthen community partnerships.
- Improve instructional delivery.

- Student success and retention.
- Improve campus circulation and wayfinding.
- Campus as a community resource.
- Reinforce education partners / academic transfer.

Facility Utilization Analysis

A comprehensive utilization analysis of instructional spaces was conducted for all three campuses to assess new facilities and where future improvements should be focused. The analysis indicates that the majority of instructional spaces are currently underutilized. Classrooms and labs in newly renovated facilities are appropriately sized and equipped, but older spaces on campus require improvement to support a more dynamic teaching pedagogy. Over the next ten years, the focus should be on the renovation of existing spaces to improve their size, flexibility and use of technology.

Community Outreach and Engagement

During the development of campus improvement concepts, numerous events were conducted to solicit input from faculty, staff, students and community partners. A series of open houses were held on campus for students and community members to gather their input, along with a focused presentation to faculty and staff. Community partners were engaged with an invitation event and presentation. With input from these events and community participation, an online survey was developed to reach those who could not attend



open houses. The feedback from all these activities assisted the Planning Committee in finalizing the master plan development concepts.

Campus Improvements

Funded by the 2016 facilities improvement bond, the Redwood Campus has seen recent improvements. Building D for the Art Program was renovated and opened in fall of 2019 and the design of the new Science Center will begin early 2020. The utilization analysis shows the campus has adequate classroom and lab space for current and future growth, so the focus for near term improvements will be to renovate existing spaces to improve student success and retention and to support more flexible learning environments. These upgraded spaces will support academic transfer and CTE focused programs. Far term improvement will also focus on renovation as well as new facilities for the Automotive Program and Campus Facilities.

Near Term Improvements

- New Science Center.
- Renovation of the Student Service Building into a Welcome Center.
- Renovation of the Library into a Student Success Center.
- Outdoor improvement to create a Campus Gateway adjacent the Welcome Center.
- Alter campus roadways to improve and simplify vehicular circulation.

- Expand parking displaced by the new Science Center.

Far Term Improvements

- New Automotive Center to replace an aging facility.
- New Campus Facilities Compound.
- Renovate Building E into a Multipurpose Campus Facility
- Explore partnership opportunities on the north portion of campus.
- Create a “Campus Commons” - outdoor activity space.
- **ADA improvement to the Rogue Bowl.**
- Parking expansion.



Master Plan Guiding Principles

Master Plan Framework

The Master Plan Guiding Principles were developed with input from the master plan advisory committee and reflect comments from campus open houses and on-line surveys. These principles are intended to create a framework for academic focus and community engagement that are supported by campus facilities and technology.



Guiding Principles

Strengthen Community Partnerships

- Improved facilities for Career and Technical Education programs
 - Automotive
 - Manufacturing
 - Mechatronics

Improve Instructional Delivery

- Improve classroom and lab utilization
 - Appropriate classroom and lab sizing — seat count and layout
 - Updated and consistent technology
- Create flexible learning environments
- Create informal learning spaces

Improve Campus Wayfinding

- Entry identification and directional signage
- Simplify circulation through campus
- Separation of vehicular and pedestrian circulation

Student Success and Retention

- Consolidate Student Services
- Campus wayfinding
- Improve Student Center
- On-campus housing
- Childcare

Campus as a Community Resource

- Improvement to the “Rogue Bowl”
- Create recreation opportunities
- Improve campus wayfinding

Expand Use of Technology

- Increase use of distance learning between campuses
- Improve infrastructure for “4th Campus” — on-line courses

Reinforce Education Partners / Academic Transfer

- Southern Oregon University (SOU)
- Oregon Institute of Technology (OIT)



Far Term Improvements

Far Term Comprehensive Plan

Far Term improvements will focus on new facilities to replace the aging Automotive Center and a new Campus Facilities Compound to centralize campus maintenance and shipping/receiving. Space vacated in Building E (former science department) will be renovated into a Multipurpose Campus Facility. Also supporting community events will be the renovation of the Rogue Bowl with ADA and performance improvements. Other outdoor improvements will include the creation of a “Campus Commons”, an outdoor activity space connecting the Student Center with the Welcome and Student Success Centers, and parking expansion on the south portion of campus.

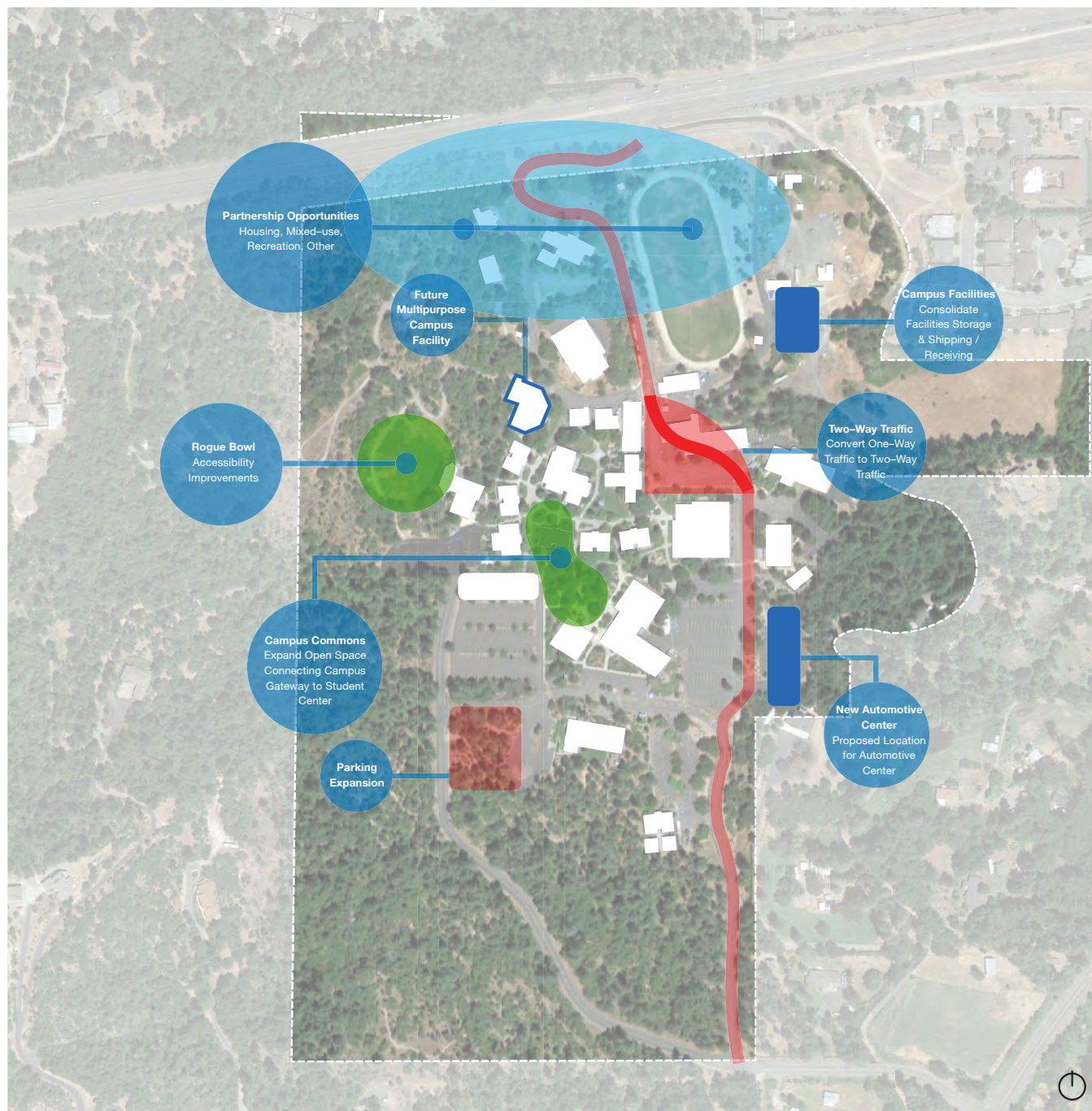


Figure 21. Far Term Comprehensive Plan

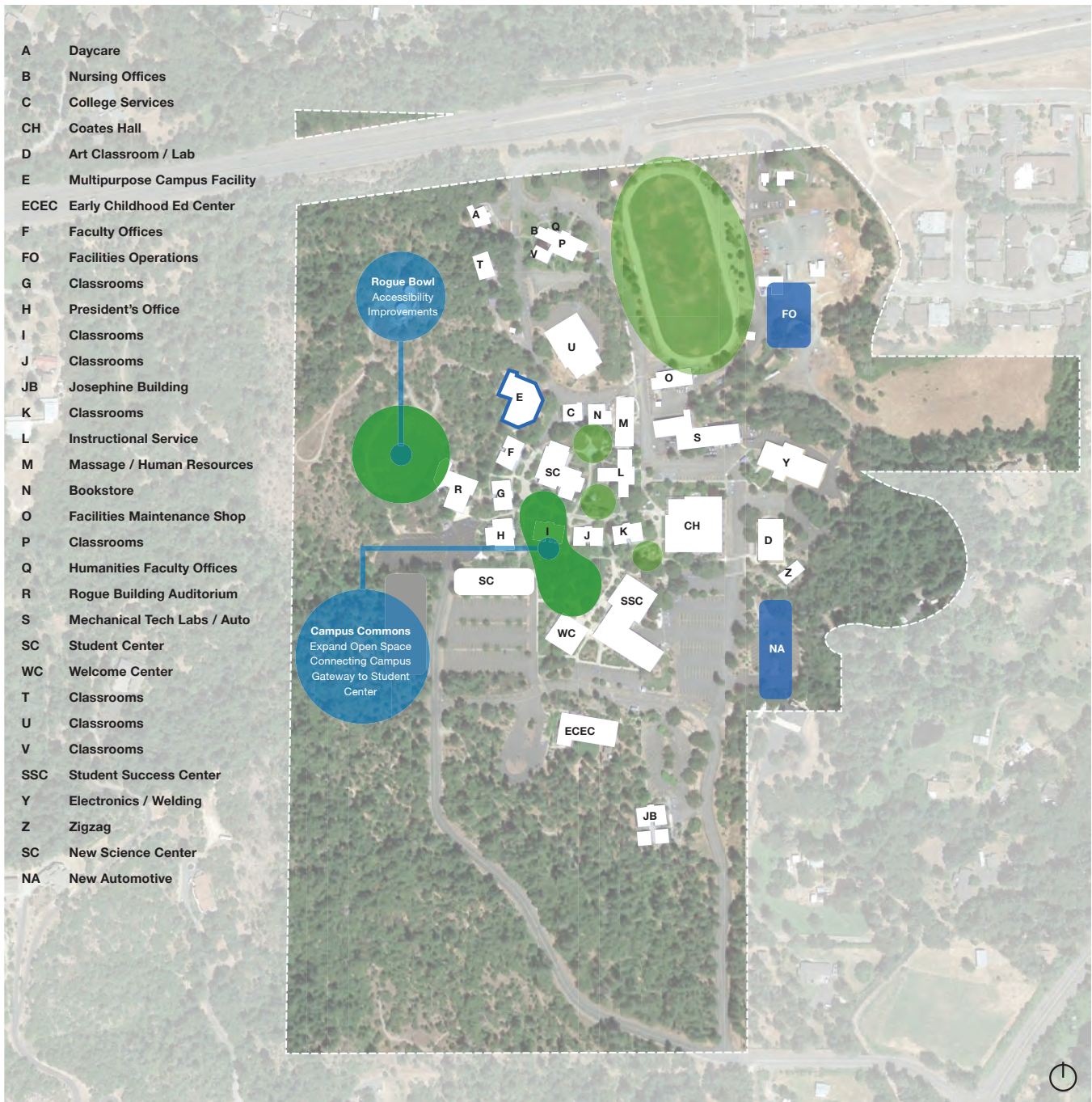


Figure 24. Far Term Open Space Improvements

Open Space Improvements

Campus Commons

The creation of a central campus open space will help connect the new Science, Welcome and Student Success Centers with the existing Student Center. This “Campus Commons” will become the central outdoor gathering space for student and campus activities. To achieve this open space Building I will be removed.

Rogue Bowl Improvements

The Rogue Bowl requires significant improvements to bring it into compliance with accessibility requirements for campus and broader community use.