

FRAMEWORK / GUIDING PRINCIPLES

Strengthen Community Partnerships

- Improve facilities for Career and Technical Education programs
- Improve facilities for Science, Technology, Engineering and Math (STEM) and transfer programs
- Create a more community-friendly and open campus

Improve Instructional Delivery

- Create modern and safe classrooms and labs
- Ensure classrooms and labs have updated and consistent instructional technology
- Create flexible learning environments
- Create informal learning spaces

Student Success and Retention

- Consolidate Services for students
- Consolidate instructional areas for students
- Improve Student Center
- Explore on-campus housing

Improve Campus Circulation and Wayfinding

- Create clear entry and wayfinding through campus
- Simplify circulation through campus
- Separation of vehicle and pedestrian circulation
- Clearly identify buildings and their purposes

Campus as a Community Resource

- Consider improvement to the “Rogue Bowl” (Accessibility)
- Create recreation opportunities

Reinforce Education Partners / Academic Transfer

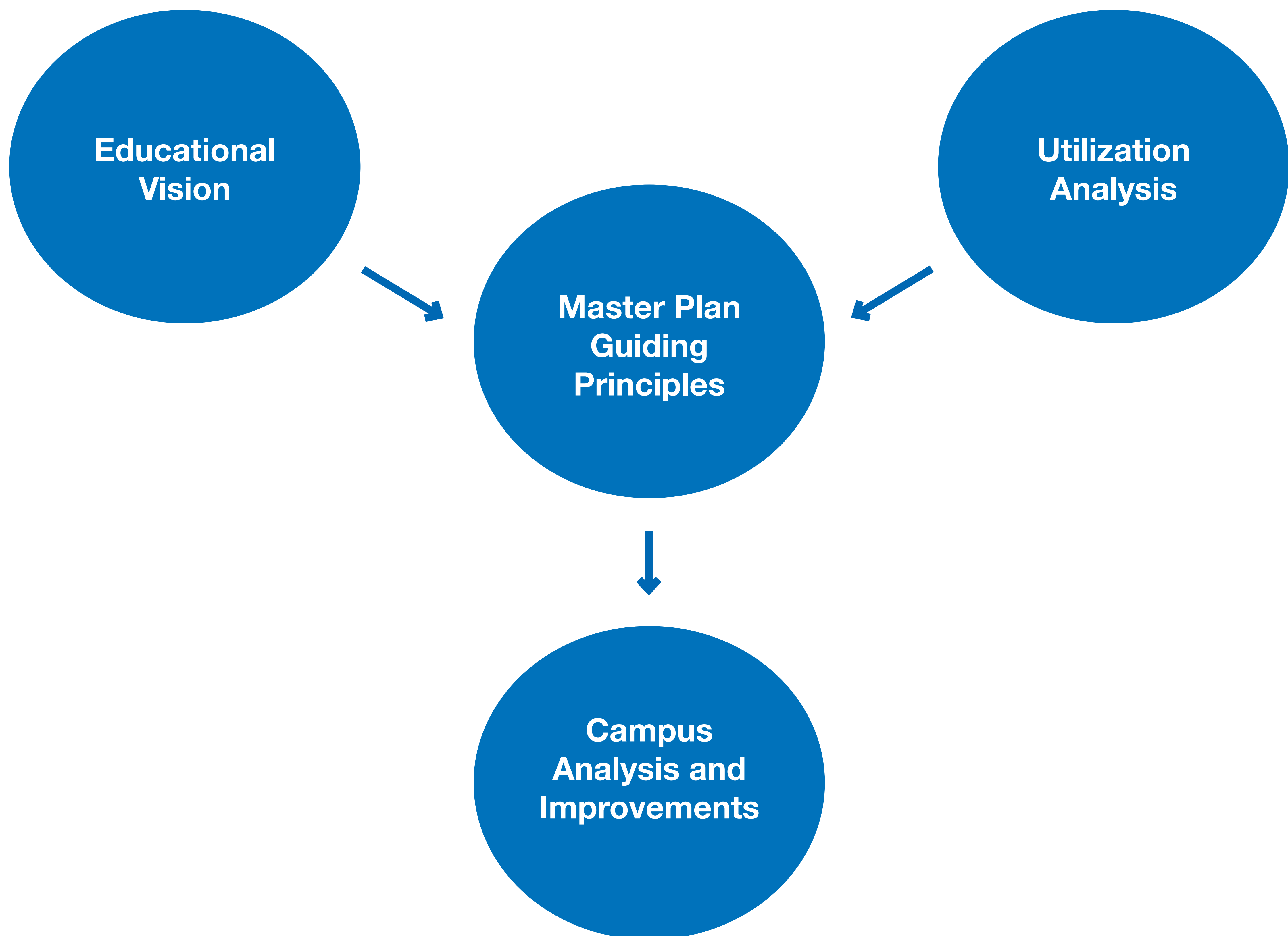
- Southern Oregon University (SOU)
- Oregon Institute of Technology (OIT)
- OSU Extension

PLANNING PROCESS

Rogue Community College leads and inspires lifelong learning.

RCC is updating the Redwood Campus Master Plan to provide a framework for future campus improvements, buildings, and growth. RCC embraces the communities we serve and invites input from faculty, staff, students and the broader community.

The planning process includes the guidance of a Steering Committee, with members representing faculty, staff, and the RCC Board of Education. The process began with a visioning session to explore strengths, needs, and areas of growth or contraction. To accompany the visioning, the process included a utilization analysis of classrooms and labs on each RCC campus, and compared current use with previous peak use and national average use. With data from the visioning and utilization analysis, and in tandem with RCC's educational vision, Guiding Principles were developed as a framework for exploring development options.



PLANNING PROCESS

Master Plan Steering Committee

Cathy Kemper-Pelle, President

Roger Stokes, RCC Board of Education

Pat Fahey, RCC Board of Education

Patricia Ashley, RCC Board of Education

Kevin Talbert, RCC Board of Education

Curtis Summerfeld, VP College Services

Kori Ebenhack, VP Student Services

Juliet Long, VP Instruction

Navarro Chandler, Dean of Instruction, General Education and Transfer

Teri Smith, Dean of Instruction, School of Health and Public Services

August Farnsworth, Dean of Student Success

Grant Lagorio, Director Facilities Services

Greg McKown, Construction Project Manager

Visioning Workshops

Instructional Services

College Services

Student Services

RCC Foundation

Facilities and Operations

Campus Technology

UTILIZATION SUMMARY

Relevance of Utilization in Design

The purpose of this study is to document the classroom and class laboratory physical assets on each of the RCC campuses. This includes a utilization analysis to understand how classrooms and laboratories are being used and to use national studies and benchmarking data to compare RCC's utilization outcomes to published guidelines.

This analysis provides results for classrooms and class laboratories at each of the RCC campus locations. Analysts examined utilization of these rooms using the fall term 2018 course file and verified facility inventory data. Understanding how efficiently classrooms and teaching laboratories are scheduled and utilized provides the foundation for and assists in the understanding and development of space guidelines. This analysis included scheduled classroom use for credit and noncredit courses and instructional activity as scheduled through RCC's course management software.

REDWOOD CAMPUS	Average Area / Seat	Average Wkly Room Hours (scheduled hrs)	Hours in Use Room Utilization (Available Hrs / Seat Hrs)
Classrooms	25	16	52%
Teaching Labs	49	15	59%

Summary:
 Classrooms: Low weekly room hours indicates surplus classroom space. Create larger more flexible classrooms.
 Labs: Improve weekly room hours.

RIVERSIDE CAMPUS	Average Area / Seat	Average Wkly Room Hours (scheduled hrs)	Hours in Use Room Utilization (Available Hrs / Seat Hrs)
Classrooms	22	19	67%
Teaching Labs	26	14	67%

Summary:
 Classrooms: Low weekly room hours indicates surplus classroom space. Create larger more flexible classrooms.
 Labs: Improve weekly room hours.

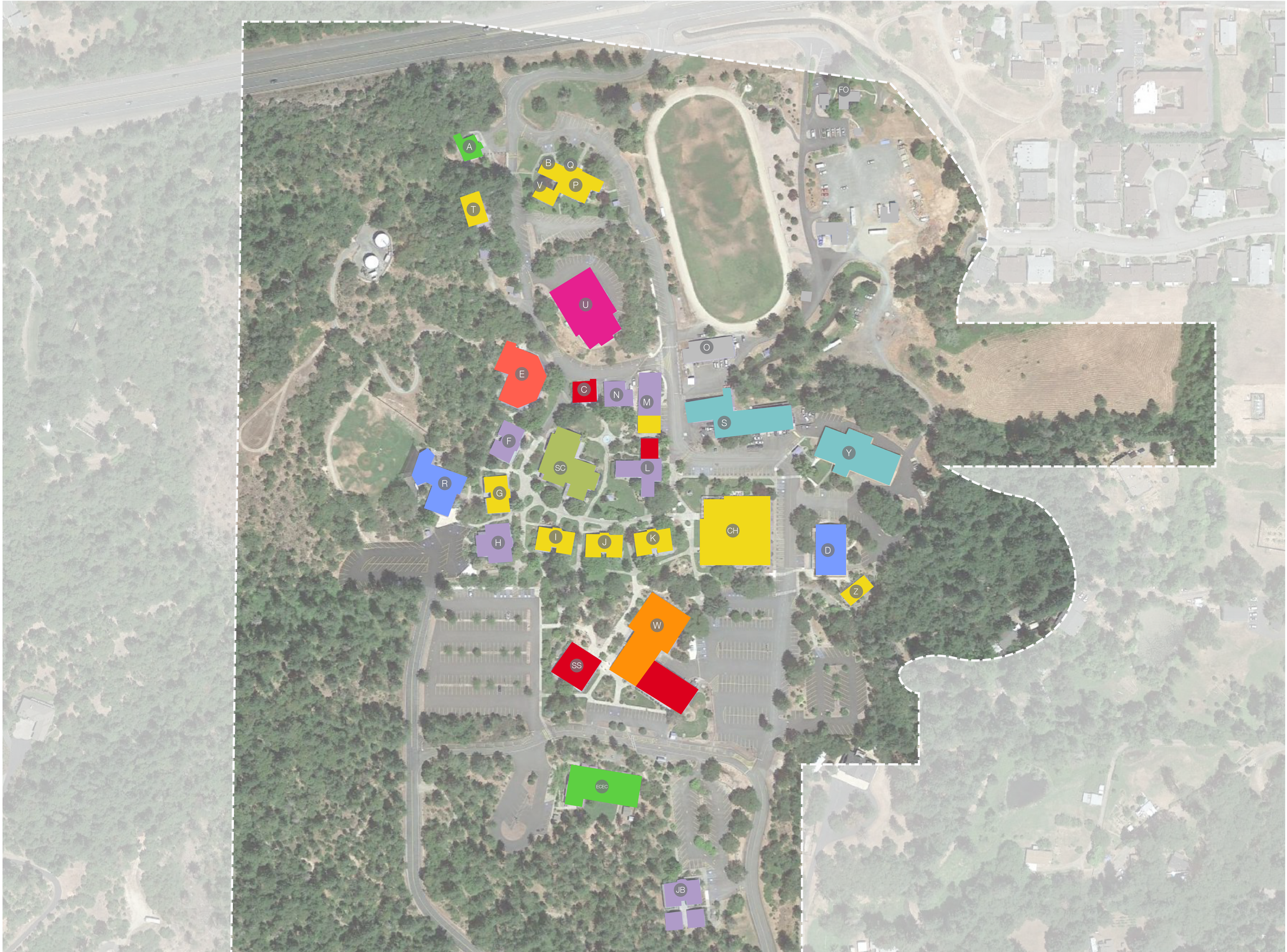
TABLE ROCK CAMPUS	Average Area / Seat	Average Wkly Room Hours (scheduled hrs)	Hours in Use Room Utilization (Available Hrs / Seat Hrs)
Classrooms	25	8	46%
Teaching Labs	43	15	61%

Summary:
 Classrooms: Low weekly room hours indicates surplus classroom space. Create larger more flexible classrooms.
 Labs: Improve weekly room hours.

NATIONAL AVERAGES	Average Area / Seat	Average Wkly Room Hours (scheduled hrs)	Hours in Use Room Utilization (Available Hrs / Seat Hrs)
Classrooms	24	32	65%
Teaching Labs	66	19	55%

Average Weekly Room Hours: The number of hours each week that an instructional space is scheduled.
Hours in Use Room Utilization: The percentage of time an instructional space is scheduled during the week.

EXISTING CAMPUS



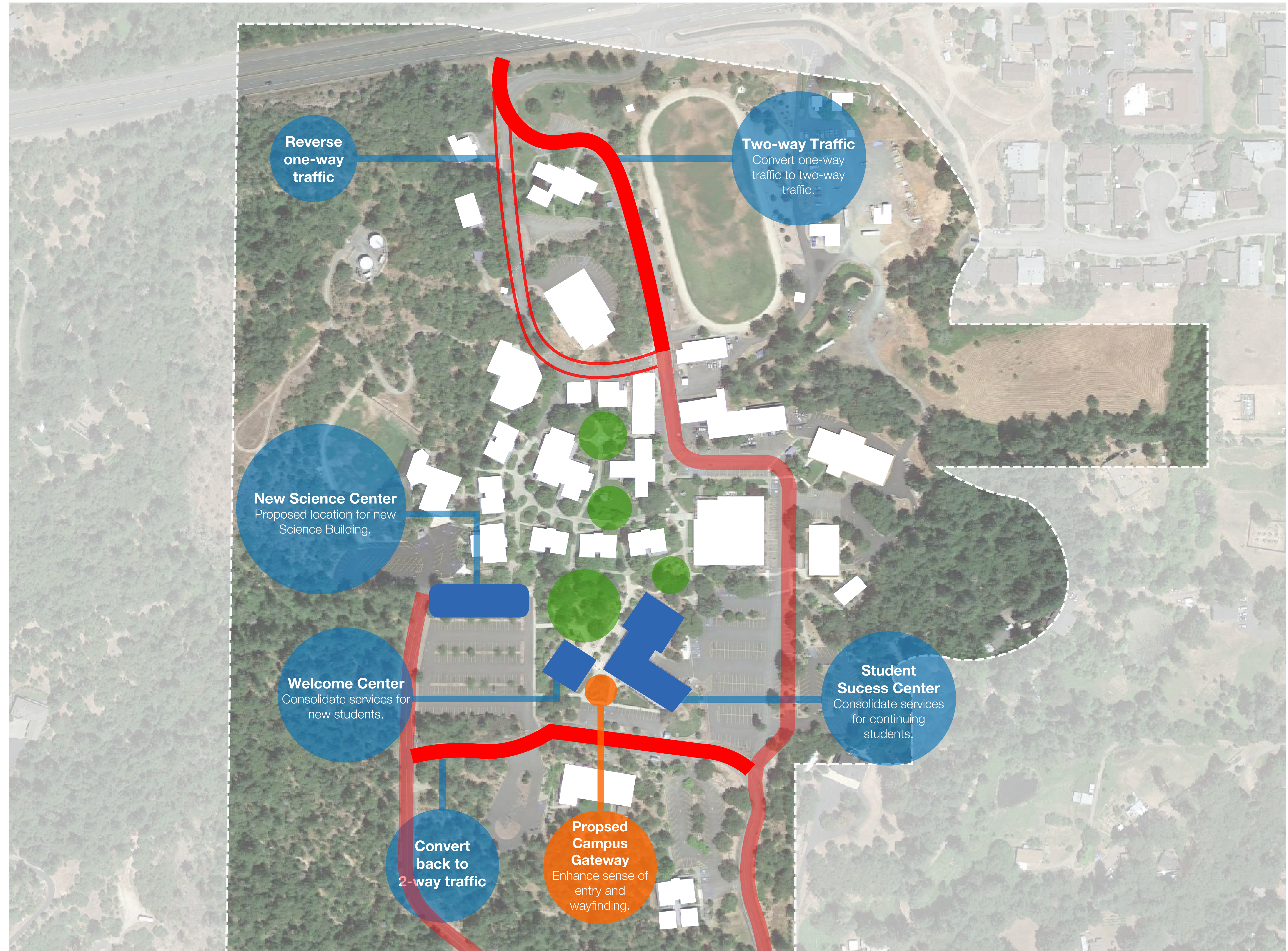
- Administration
- Arts
- Career Technical Education
- Classroom
- Facilities
- Family Services
- Food Services
- Library
- Science
- PE / Recreation
- Student Services

- | | | | |
|------|---------------------------|----|-----------------------------|
| A | Daycare | M | Massage / Human Resources |
| B | Nursing Offices | N | Bookstore |
| C | College Services | O | Facilities Maintenance Shop |
| CH | Coates Hall | P | Classrooms |
| D | Art Classroom / Lab | Q | Humanities Faculty Offices |
| E | Science / Classroom Lab | R | Rogue Building Auditorium |
| ECEC | Early Childhood Ed Center | S | Mechanical Tech Labs / Auto |
| F | Faculty Offices | SC | Student Center |
| FO | Facilities Operations | SS | Student Services |
| G | Classrooms | T | Classrooms |
| H | President's Office | U | Classrooms |
| I | Classrooms | V | Classrooms |
| J | Classrooms | W | Library / Tutoring |
| JB | Josephine Building | Y | Electronics / Welding |
| K | Classrooms | Z | Zigzag |
| L | Instructional Service | | |

EXISTING CAMPUS ZONING

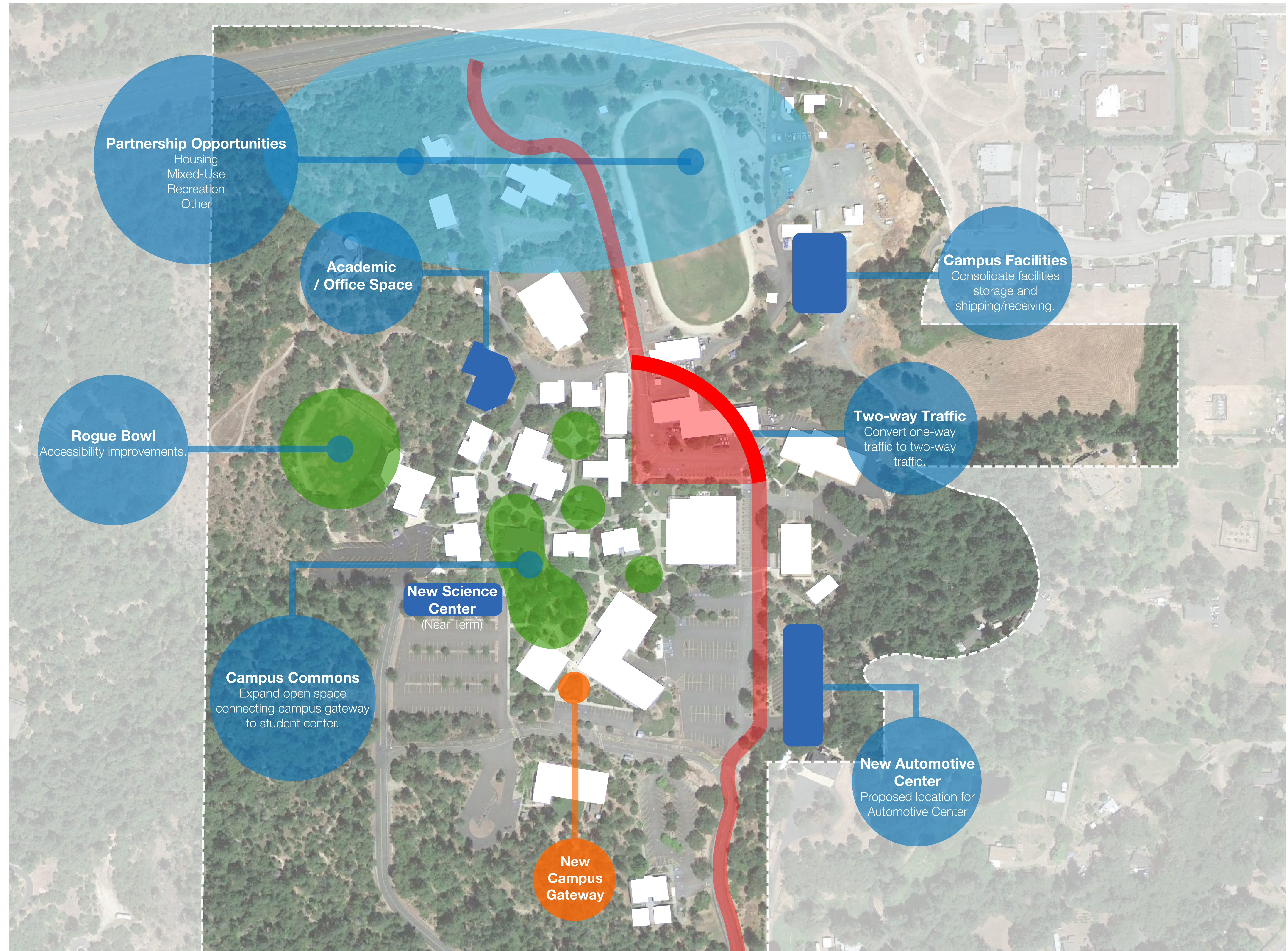


NEAR TERM CAMPUS IMPROVEMENTS



- Proposed Building Removal
- Proposed Building Addition / Relevant Program change
- Existing Building
- Campus Center
- Proposed Circulation
- Proposed Public Partnership
- Proposed Campus Gateway

FAR TERM CAMPUS IMPROVEMENTS



-  Proposed Building Removal
-  Proposed Building Addition / Relevant Program change
-  Existing Building
-  Campus Center
-  Proposed Circulation
-  Proposed Public Partnership
-  Proposed Campus Gateway
-  Proposed Parking Addition

PROPOSED CAMPUS ZONING

