

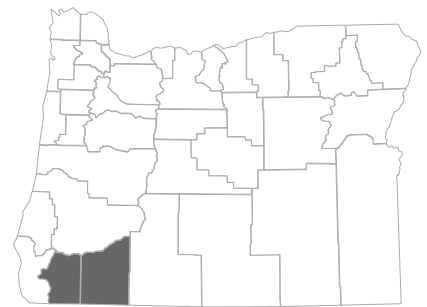
The Economic Value of Rogue Community College



Rogue Community College (RCC) creates a significant positive impact on the business community and generates a return on investment to its major stakeholder groups—students, taxpayers, and society. Using a two-pronged approach that involves an economic impact analysis and an investment analysis, this study calculates the benefits received by each of these groups. Results of the analysis reflect fiscal year (FY) 2023-24.

Economic impact analysis

In FY 2023-24, RCC added **\$325.6 million** in income to the economy of Jackson and Josephine Counties, a value approximately equal to **1.9%** of the region's total gross regional product (GRP). Expressed in terms of jobs, RCC's impact supported **4,251 jobs**. For perspective, the activities of RCC and its students support **one out of every 42 jobs** in Jackson and Josephine Counties.



Jackson and Josephine
Counties, Oregon

Operations spending impact

- RCC employed 767 full-time and part-time faculty and staff. Payroll amounted to \$36.8 million, much of which was spent in the region on groceries, mortgage and rent payments, dining out, and other household expenses. The college spent another \$18.6 million on its expenses related to facilities, supplies, and professional services.
- The net impact of the college's operations spending added **\$45.3 million** in income to the regional economy in FY 2023-24.

Student spending impact

- Around 4% of students attending RCC originated from outside the region. Many of these students relocated to Jackson and Josephine Counties. In addition, some in-region students, referred to as retained students, would have left Jackson and Josephine Counties for other educational opportunities if not for RCC. These relocated and retained students spent money on groceries, mortgage and rent payments, and other living expenses at businesses in the region.
- The expenditures of relocated and retained students in FY 2023-24 added **\$8.3 million** in income to the economy of Jackson and Josephine Counties.

Alumni impact

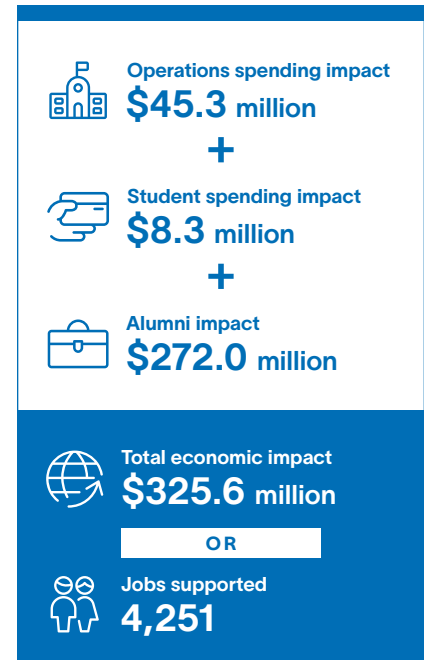
- Over the years, students have studied at RCC and entered or re-entered the workforce with newly acquired knowledge and skills. Today, thousands of these former students are employed in Jackson and Josephine Counties.
- The net impact of RCC's former students currently employed in the regional workforce amounted to **\$272.0 million** in added income in FY 2023-24.

Investment analysis

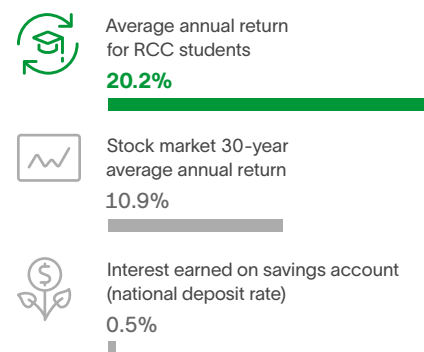
Student perspective

- RCC's FY 2023-24 students paid a present value of **\$10.4 million** to cover the cost of tuition, fees, supplies, and interest on student loans. They also forwent a value of **\$7.3 million** in time and money had they been working instead of attending college.
- In return for their investment, students will receive a cumulative present value of **\$98.5 million** in increased earnings over their working lives. This translates to a return of **\$5.60** in higher future earnings for every dollar students invest in their education. Students' average annual rate of return is **20.2%**.

Impacts created by RCC in FY 2023-24



Students see a high rate of return for their investment in RCC



Source: Forbes' S&P 500, 1994-2025; FDIC.gov, January 2024



Taxpayer perspective

- Taxpayers provided RCC with **\$42.2 million** of funding in FY 2023–24. In return, they will benefit from added tax revenue, stemming from students' higher lifetime earnings and increased business output, amounting to **\$37.0 million**. A reduced demand for government-funded services in Oregon will add another **\$3.9 million** in benefits to taxpayers.
- Total taxpayer benefits amount to **\$40.9 million**, the present value sum of the added tax revenue and public sector savings.

Social perspective

- In FY 2023–24, Oregon invested **\$66.1 million** to support RCC. In turn, the Oregon economy will grow by **\$384.0 million** over the course of students' working lives. Society will also benefit from **\$6.8 million** of public and private sector savings.
- For every dollar invested in RCC in FY 2023–24, people in Oregon will receive **\$5.90** in return, for as long as RCC's FY 2023–24 students remain active in the state workforce.

