

Ospreys Athletics

Program Review



Rogue Community College

June 2018

Athletics Snapshot



- ▶ Women's & Men's Soccer.
- ▶ Both teams compete in the South Division of the Northwest Athletic Conference (NWAC). The NWAC is made up of 36 Community Colleges from Oregon, Washington, Idaho, and British Columbia. The south division is made up from schools largely on the I-5 corridor in Oregon.
- ▶ 16 Female (6 sophomores, 10 freshman); 21 Male (8 sophomores, 13 freshman)
- ▶ Program Notes:
 - ▶ 2 South Division Coach of the Year Awards
 - ▶ 1 Player of the Week Award
 - ▶ 1 MVP
 - ▶ 5 All-Star Team Selections
 - ▶ 13 All-Region Team Selections
 - ▶ 5 Academic Excellence Awards
 - ▶ 6 Graduating within 2 years
 - ▶ 3rd & 4th Players to Transfer to a 4-Year Athletic Program
 - ▶ College Retention Rate: 75%
 - ▶ Athletic One-And-Done Rate: 64%
 - ▶ Fall 2017 to Spring 2018 Athletic Retention Rate: 73%
 - ▶ 29 Recruits Joining Fall 2018

Section 1: Mission



The RCC Athletic Department will successfully integrate academic and athletic experiences in an atmosphere of **RESPECT, HARD WORK, FAIRNESS, & INTEGRITY**. We believe that academic and athletic excellence are mutually compatible. In that spirit, the department will achieve these goals:

Provide student-athletes with a constructive learning experience that:

- ▶ Inspires significant personal growth.
- ▶ Enhances the development of positive social values critical for personal and professional success.
- ▶ Promotes a college culture where academic achievements and athletic success are a part of the total campus experience.
- ▶ Recruits and retains disciplined and competitive student-athletes and teams committed to winning with sportsmanship and appropriate campus conduct.
- ▶ Builds a community of scholar-athletes, coaches, and staff whose primary focus is to achieve academic excellence, develop teamwork, and commit to athletic competition and outstanding performance.

The department will fulfill its mission in keeping with the college mission to provide quality education to help learners achieve their goals and to support the social, civic, cultural, and economic vitality of our diverse community.

Section 1: Mission

- ▶ In addition to the guiding department mission each team builds from this foundation and constructs their own values and mission each season.
- ▶ During the student-athlete orientation the guiding values and focus for the student athletes as a whole are constructed and reiterated through the academic advising process.

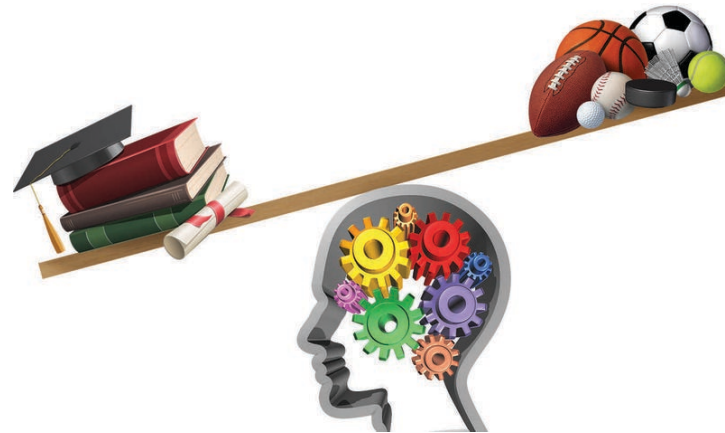
Fairness
Communication
Teamwork
Bonding
Trust **People** **Respect**
Work **Ohana**
Fun **Playoffs**
Ospreys
Integrity **Win**
Development
Longevity
Commitment



Section 2: Program



- ▶ Student Athlete Orientation “Flight School”
- ▶ CG100(A) - College Success and Survival for Athletes
- ▶ Academic Advising
 - ▶ Resource and Network Support - Faculty & Counseling Advising
 - ▶ Study Hall
 - ▶ Week 4 Grade Checks
 - ▶ Week 8 Appointment
 - ▶ “Open” Door Policy
- ▶ Ospreys FC Student Club
- ▶ Regular & Training Seasons per Sport



Section 2: Program

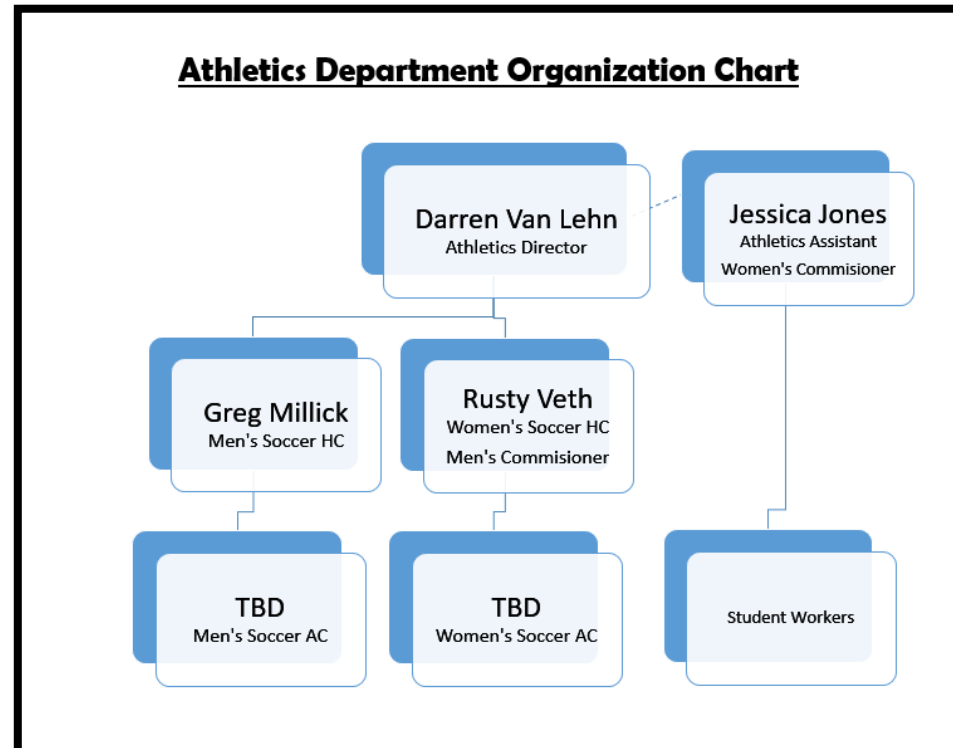


- ▶ Department Goals:
- ▶ 1. Increase Retention Rate in Athletics Program by percentage point of 10
 - ▶ From 11 to 12
 - ▶ Objectives 5 & 6
- ▶ 2. Host 1 Student Engagement Activity per Term
 - ▶ Assist with overall student retention
- ▶ 3. Increase Community Partnerships & Sponsorships
 - ▶ Initial goal of raising 3% of a team's budget

Section 3: Organization & Leadership




- ▶ Northwest Athletic Conference (NWAC)
- ▶ Athletic Director
- ▶ Athletics “Assistant”
- ▶ Men & Women’s Commissioners
- ▶ Head Coaches
- ▶ Assistant Coaches
- ▶ Student Workers



Section 4: Human Resources




- ▶ Athletic Director 360 Annual Evaluation
- ▶ Athletics “Assistant” (Student Life Coordinator) Annual Classified Evaluation
 - ▶ Director of Student Programs
- ▶ Head Coaches
 - ▶ Annual Team Focused Evaluation
 - ▶ Annual A.D. Year-End Meeting
- ▶ Assistant Coaches
 - ▶ Head Coach Review

COACH:	SPORT:	DATE:					
<small>The athletic department at Southwestern Oregon Community College is constantly working to improve its programs. Please fill out this form to the best of your ability. The results of this evaluation will be compiled on to one sheet and given to the coach. All individual evaluations will be treated as confidential and will be destroyed after being tabulated.</small>							
 Rogue Community College GO OSPREYS!			COACHES EVALUATION				
			Outstanding	Good	Average	Below Average	Poor
1	Sets good example for athletes to follow and dresses appropriate.						
2	Conveys a realistic and high expectation level for athletes.						
3	Demonstrates sound judgment in preparing/changing strategy.						
4	Maintains good communication with athletes.						
5	Exhibits a positive and considerate attitude towards players rights and feelings.						
6	Analyzes and corrects skills appropriately.						
7	Exhibits self-discipline and confidence.						
8	Exercises leadership power appropriately and earns respect of athletes.						
9	Makes individuals feel that they are an important part of the team.						
10	Clearly states goals, objectives and rules associated with appropriate discipline.						
11	Shows a genuine concern for the overall well-being of the athletes.						
12	Demonstrates honesty and integrity.						
13	Encourages a maximum effort from each athlete while teaching fundamental skills.						
14	Was fair and reasonable at evaluation and utilizing the talent and skills on the team.						
15	Conducted an appropriate physical conditioning program.						
16	Practice is well planned and practice time is managed well.						
17	Coach handles winning and losing in an appropriate manner, with dignity and composure.						
18	Coach's ability to deal with athlete difficulty was...						
19	Is fair and reasonable in dealing with team/individual problems.						
20	Coach is on time and enthusiastic for practice/event.						
21	Acknowledges reasonable questions and attempts to answer.						
22	Is achieving the objectives and goals set for the team.						
23	Considering everything, how do you rate this coach?						
24	Please include addition comments for COACH here. <small>(attach extra sheet if additional space is needed or on the reverse of this form.)</small>						

Section 5: Ethics



- ▶ FERPA
- ▶ Title IX
- ▶ NWAC Criteria and Letters of Intent
- ▶ Students Rights, Freedoms, & Responsibilities
- ▶ Student Athlete Agreements



Ospreys Athletics Student-Athlete Agreements

RESPECT - HARD WORK - FAIRNESS - INTEGRITY

As student-athletes you are held to both academic and athletic requirements. You have health, insurance, and fitness requirements to go along with your athletics skills. In the classroom you have GPA and credit requirements that must be met and upheld to continue as a college athlete (in the classroom and on the field) and maintain receiving any benefits, waivers, scholarships, or other financial awards.

As a part of Ospreys athletics you are a part of something that is much bigger than any individual. Thus our attitude and character are of high importance to us during competition, in class, on campus, and in the community. You represent the college and all of its athletics programs. Respect for yourself and others is always expected in all situations. Dishonesty is not tolerated in any form (in person, grade checks, insurance and health [info](#), etc.). Hard work is what we all put in.

Academic Requirements:

Must maintain at least a 2.0 to GPA in each term and throughout the school year to remain eligible for all funding, remain in positive standing with the school, and be able to continue with all aspects of your athletic team.

After completion of your first season of athletics you must complete at least 36 credits and maintain above a 2.0 GPA to earn eligibility for your second season. Those 36 credits include the term of your first season of participation but do not include any prior college credits that were completed.

Practice Requirements:

Your coach handles your practice schedule and specific expectations. From the athletics department point of view your expectation is that you attend all practices, are ready to begin practice at the scheduled time, and will remain in practice until it is completed unless given alternate specific instructors from your coach or have pre-approval from your coach to adjust any of the expectations. The head coach will have final say on if your practice actions constitute a violation.

Study Hall Requirements:

All incoming first year athletes are required to attend Study Hall during the season of competition. Study Hall will be scheduled twice a week. Once the sport season ends Study Hall time may be adjusted to fill previous practice time to make it more accommodating to all.

Any student who has at least an 80% completion rate of classes and above a 2.0 GPA is no longer required to attend Study Hall after the first season of competition. Thus any student who falls below these marks will be required to continue to attend twice a week Study Hall until those levels are met. Pre-approval from your coach is required to miss any Study Hall time and those hours will need to be made up either in the coach's office or the athletics office.

When Study Hall is in operation all student-athletes are welcome to attend even if they are not required to be there. During Study Hall expectations are that you are NOT on your cell phone, you ARE working on homework assignments either at a desk or at a computer. The purpose is to focus on the school work so any activities not related to that goal are generally discouraged.

Grade Check Requirements:

Grade Checks happen twice each term. In Week 4 you are required to complete the Grade Check form. In Week 8 you are required to schedule an appointment with the Athletic Advisor to review current grades and plan for the upcoming term.

Grade Checks are required throughout the school year. Any athlete who is receiving an Athletic Tuition Waiver past their second season of competition is required to continue grade checks. All other second year athletes who are continuing at Rogue as students are subjected to grade checks at the coach's discretion.

Violation Policies (Consequences):

Violation Defined: A violation is the failure to follow through on any of the specific requirements listed on the previous page under agreements. For any reason that you need to not follow through on explained requirements there must be a pre-approved excuse by your head coach otherwise it will still be considered a violation. Explaining why you did not follow through afterward is generally not acceptable unless it was unforeseen incidents that lead to the violation.

1. A warning and requires a meeting with the athletic advisor/head coach to discuss why the violation occurred
2. Suspension of practice activities for the day (practice must still be attended however the head coach will have specific activities for you to do)
3. Removal from practice for a day
4. Not allowed to start and must remain out of the next contest for at least the first 15 min.
5. Suspended for one game
6. Suspended for one week from all team activities
7. Suspended for two weeks from all team activities
8. Removed from team until approved return

Out of season violation consequences:

During off season term the violations relate to team activities and weight lifting programs. During "spring" season or off season training time of the year all violations relate to training activities in regards to the way your coach structures them. Violations can accrue over time at coach's & athletic department discretion and can be enforced during the training season. Generally speaking as a new school year/season year begins you will start with a clean sheet.

Section 6: Law, Policy, & Governance - Section 7: Diversity, Equity, & Access



- ▶ Title IX
- ▶ Equity in Athletics Disclosure Act (EADA)
- ▶ NWAC Requirements
 - ▶ SOP's
 - ▶ Athlete Eligibility:
 - ▶ First Season Requirements
 - ▶ Second Season Requirements
- ▶ Rogue CC Health Eligibility Requirements
 - ▶ Physicals
 - ▶ Insurance



Section 6: Law, Policy, & Governance - Section 7: Diversity, Equity, & Access



- ▶ Additional Trainings:
 - ▶ Our Head Coaches are required to have a minimum of a C Level license or equivalent from US Soccer.
 - ▶ B & A Licenses
 - ▶ Annual Concussion Trainings
 - ▶ First Aid and CPR Trainings
 - ▶ Head & Assistant Coaches
 - ▶ NWAC Rules and Regulations Certifications
 - ▶ Head & Assistant Coaches



Section 8: Internal & External Relations



▶ Internal:

- ▶ Budget & Finance
- ▶ Rogue Central & Financial Aid
- ▶ TRiO ROC & SSS
- ▶ Counseling & Advising
- ▶ Disability Services
- ▶ Facilities
- ▶ Career & Student Employment Services
- ▶ Latino Services
- ▶ Rogue Foundation

▶ External:

- ▶ Medford Parks & Recreation
- ▶ Providence Health Sports Medicine
- ▶ Under Armour & ProStock Athletics
- ▶ Baden Sports
- ▶ The Courthouse & Athletic Edge
- ▶ Enterprise
- ▶ NWAC Administration & Member Schools



Section 9: Financial Resources



- ▶ College Services Funds
- ▶ Auxiliary Funds
- ▶ Additional Fund Sources
 - ▶ Rogue Hero Campaign
 - ▶ Direct Funding from Students
- ▶ Fundraising
 - ▶ eTeamSponsors
 - ▶ Camps
 - ▶ Community Engaged
- ▶ Sponsorships
 - ▶ Rogue Credit Union



Section 10: Technology



- ▶ NWAC Reporting
 - ▶ Eligibility Reports - Director of Enrollment Services
 - ▶ Letters of Intent
- ▶ Krossover
- ▶ Presto Sports
- ▶ Social Media
 - ▶ Facebook & Twitter
- ▶ Providence Healthy Roster
- ▶ Rogue Net



Section 11: Facilities & Equipment

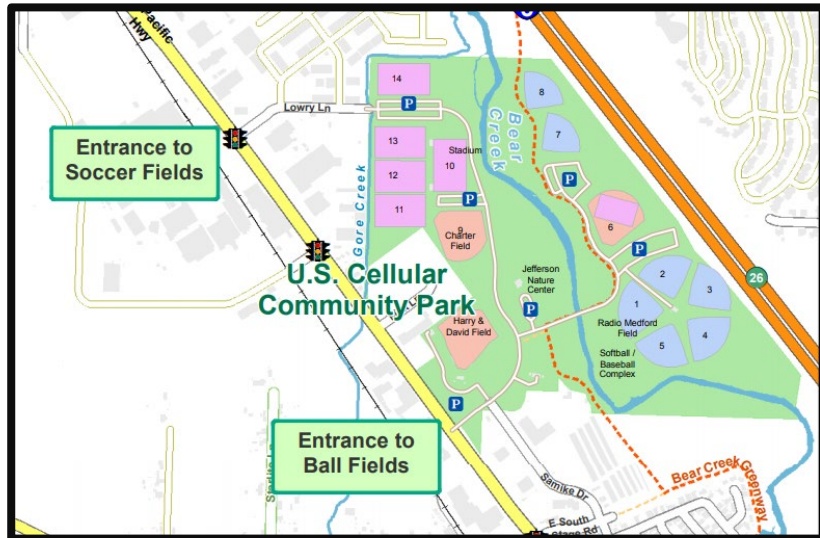


- ▶ Athletics Dept. Equipment & Team Equipment
 - ▶ Team Uniforms: Each team as a full set of uniforms (socks, shorts, jersey tops) that are purchased from Under Armour
 - ▶ Training Gear Uniforms: Each team also has warm-up, training, and travel gear for each player. Gear consists of items such as jackets, backpacks, training tops and shorts.
 - ▶ Training Equipment: Soccer balls, popup goals, cones, ladders, equipment carts, and any product that is a necessity for effective practices and training.
 - ▶ Game Management Equipment: All equipment needed to operate a home game. Equipment consists of canopies, water jugs, water storage, cooler, tables, chairs, sandbags, Hi-Pod, equipment cart, and materials needed for in-game stats.

Section 11: Facilities & Equipment



► US Cellular Community Park



Section 11: Facilities & Equipment



► Offices



Section 11: Facilities & Equipment



- ▶ Additional:

- ▶ RWC Gym
- ▶ Athletic Edge & The Courthouse
- ▶ Hawthorne Futsal Court

FACILITIES

Section 12: Assessment-Conclusion



- ▶ We are new and growing program. The challenge with being new is that we are not a part of standard life at Rogue. Therefore we must always look to educate others about who and what we are and why we bring value to the college.
- ▶ We have to push held beliefs about both Rogue and Athletics to help shape the vision and acceptance we want at the college. And we have to learn to use more patience as we gain establishment, look to work with and assist until the college has fully adapted to the world of collegiate athletics.
- ▶ At the same time we have to continue to work hard and look for outside opportunities and partners that we can learn and benefit from to establish ourselves in the community long term.

Questions?

