

Sustainable Community Development

Holland code family: Doers

Focus Award

www.roguecc.edu/Counseling/HollandCodes/test

The Sustainable Community Development focus award (18-23 credits) provides students with the knowledge, skills and experiences that will allow them to play a vital role in developing and strengthening their communities for the twenty-first century. Diversity and sustainability are issues that present great challenges as well as incredible opportunities to create strong, thriving communities that meet the needs of their members and the environment.

Community development includes nurturing the integration of socially, culturally, and economically diverse groups to work together for common interests and the expansion of sustainable practices. Community development is studied holistically, including learning leadership and communication skills, how to effectively utilize the diversity inherent in American communities, and how people can live sustainably in their own locales.

Completing the Sustainable Community Development focus award is an excellent addition to a resume. Knowledge of sustainability and diversity issues may be skills employers consider. Students should be aware that prerequisites exist for most courses, so they should plan accordingly.

Program Learning Outcomes

The curriculum in RCC courses is derived from a set of identified learning outcomes that are relevant to the discipline. Program learning outcomes for the Sustainability Focus Award are:

Leadership and Communication: Demonstrate the ability to communicate effectively within a group setting.

Diversity: Analyze the relationship between diversity and social inequality and demonstrate knowledge of ways in which diverse groups can work together.

Sustainability: Demonstrate the ability to apply the concept of sustainability in examining human relationships with the environment and to identify sustainable solutions to environmental problems.

Required courses

(must be completed at RCC)

| Course No. | Course Title | Credits |
|-------------------------------|--------------------------------|-------------|
| SOC213 | Race and Ethnicity in the U.S. | 4 |
| SOC228 | Environment and Society | 4 |
| SRV101 | Service Learning | 1-2 |
| TOTAL REQUIRED CREDITS | | 9-10 |

Electives

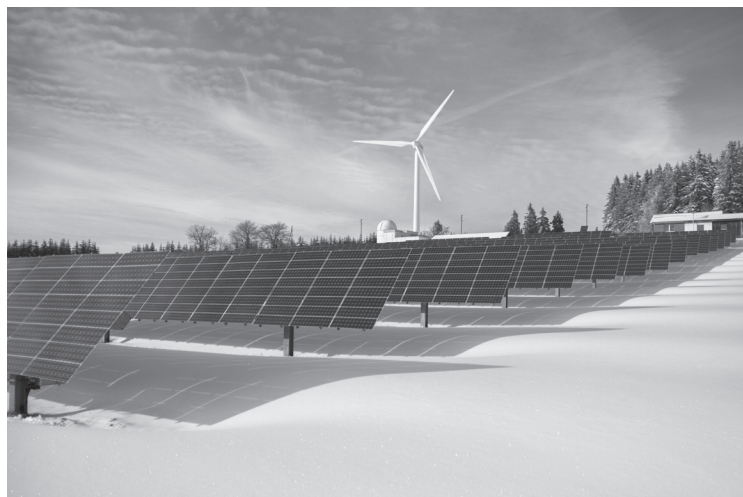
(Choose elective courses from the following):

Leadership and Communication (3-4 credits minimum)

| Course No. | Course Title | Credits |
|-----------------|---|---------|
| BA131 | Introduction to Business Computing | 4 |
| BA214 | Business Communications | 4 |
| ED120, 121, 122 | Leadership I, II, III | 1-3 |
| SP111 | Fundamentals of Public Speaking | 4 |
| SP115 | Introduction to Intercultural Communication | 4 |
| SP218 | Interpersonal Communication | 4 |
| WR227 | Technical Writing | 4 |
| — | Cooperative Work Experience as approved within major ¹ | 3 |

Diversity (one class, 3-4 credits)

| Course No. | Course Title | Credits |
|------------------------|---|---------|
| ANTH110 | Introduction to Cultural Anthropology | 4 |
| CJ214 | Crime, Justice and Diversity | 4 |
| COMM237 | Communication and Gender | 4 |
| ECE275 | Anti-bias Education | 3 |
| ENG257 | African American Literature | 4 |
| ENG260 | Introduction to Women Writers | 4 |
| HUM215/216/217/218/219 | Native American Arts/Cultures | 4 |
| IS110 | Introduction to International Studies I | 4 |
| REL201 | World Religions | 4 |
| SOC218 | Sociology of Gender | 4 |
| SOC235/HST259 | The Chicano/Latino Historical Experience | 4 |
| — | Cooperative Work Experience as approved within major ¹ | 3 |



Sustainability (one class, 3-5 credits)

| Course No. | Course Title | Credits |
|------------|--|---------|
| BI213 | General Biology III with lab | 4 |
| EET113 | Exploration of Alternative Energies (may not transfer) | 3 |
| EET118 | Introduction to Renewable Energy Systems (may not transfer) | 5 |
| ENV111 | Introduction to Environmental Science | 3 |
| GEOG100 | Introduction to Physical Geography | 3 |
| GEOG110 | Introduction to Cultural and Human Geography | 3 |
| REL243 | Nature, Religion and Ecology | 4 |
| — | Cooperative Work Experience classes as approved within major 1 | 3 |

| | |
|----------------------------------|--------------|
| TOTAL ELECTIVE CREDITS | 9-13 |
| TOTAL FOCUS AWARD CREDITS | 18-23 |

Note: This focus award is not a formal, transcribed degree or certificate but recognizes student achievement in a specific topic or theme. Focus awards may be earned in combination with a certificate or degree. Classes are lower-division collegiate courses (except where noted) that may transfer to a variety of programs at a four-year college or university as elective credits, program requirements, and/or graduation requirements for the receiving institution. Students are encouraged to check with the receiving institution and their RCC academic advisor for the most accurate transfer requirement information.

¹ A maximum of 3 Cooperative Work Experience credits may be used toward the focus award as approved by focus award advisor.

For more information contact the Social Science Department:

Grants Pass or Medford 541-245-7508

Toll free in Oregon 800-411-6508, Ext. 7508

Web address www.roguecc.edu/programs/sustainability

TTY Oregon Telecom Relay Service, 711

This advising guide is for advising purposes only. Please see current college catalog for additional information on specific college policies and graduation requirements.

RCC is an open institution and does not discriminate. For RCC's non-discrimination policy and a full list of regulatory specific contact persons visit the following webpage: www.roguecc.edu/nondiscrimination.



